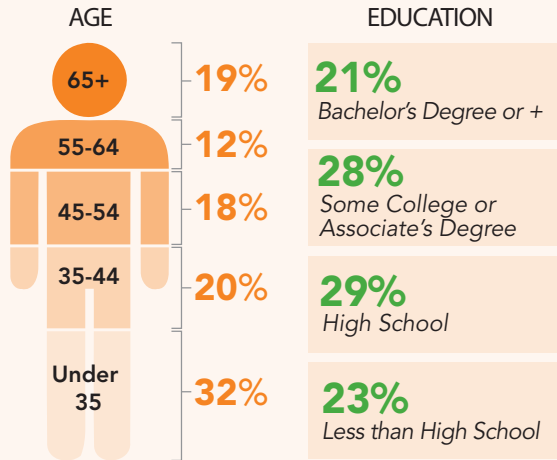


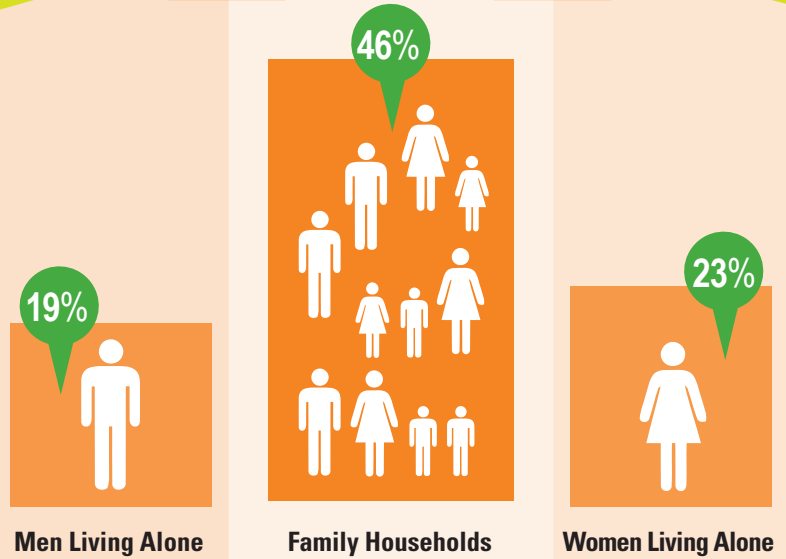
A LOOK *at* RENTERS *in* RI

RENTERS *in* RI



US Census Bureau, 2010 American Community Survey

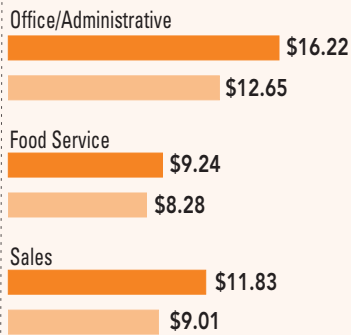
TYPE of HOUSEHOLD



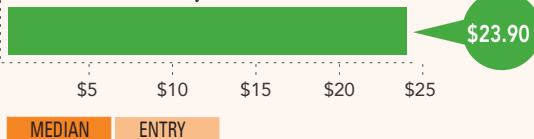
US Census Bureau, 2010 Census

WAGES: EARNED *vs.* NEEDED*

FOR MOST FREQUENTLY EMPLOYED OCCUPATION GROUPS IN RI



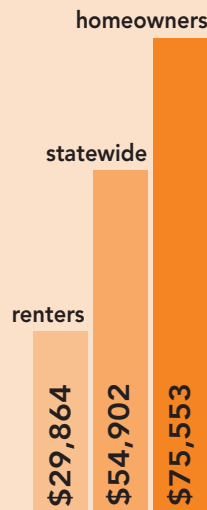
HOURLY WAGE NEEDED *for a 2-BEDROOM APT.*



WAGES EARNED: Rhode Island Department of Labor and Training, Occupational Wage Report 2010. WAGES NEEDED: Rhode Island Housing 2010 Rental Survey. Hourly wage needed based on 37.5 hour work week

*For a 2-Bedroom Apartment in RI

MEDIAN HOUSEHOLD INCOME



US Census Bureau, 2010 American Community Survey

27%

1 in 4 RI renters are spending 50% or more of their income on housing expenses

Joint Center for Housing Studies of Harvard University tabulations of the US Census Bureau, 2010 American Community Survey

INCREASES IN RENTAL PRICES 2001 - 2010



Rhode Island Housing 2010 Rental Survey