

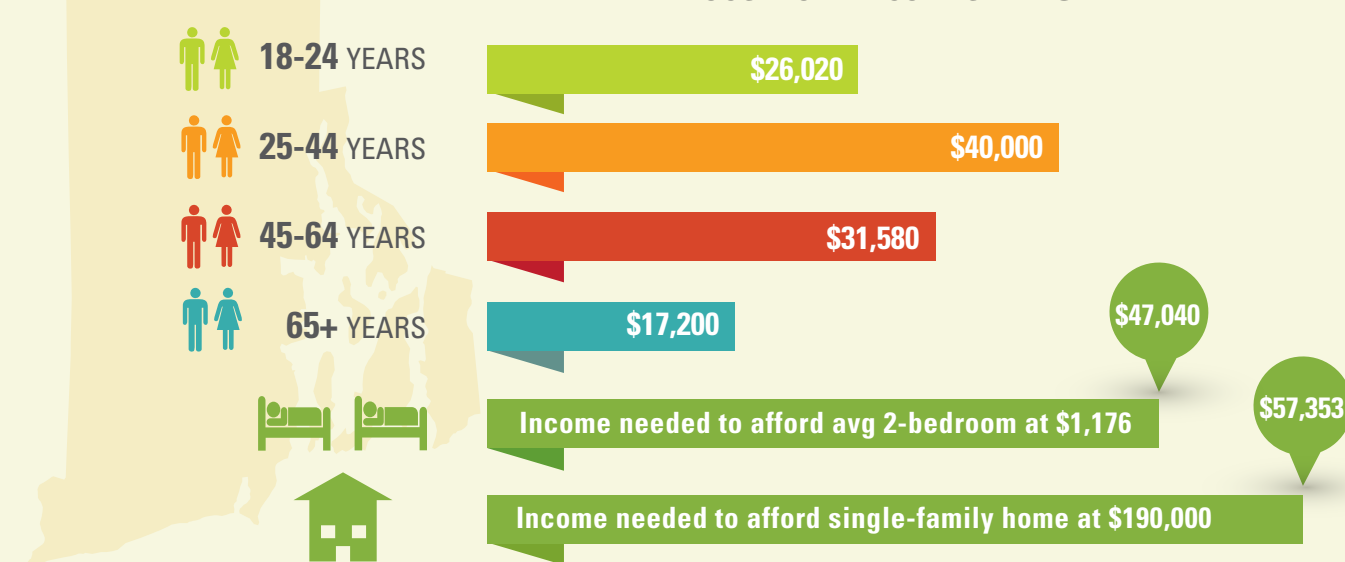
A LOOK at RENTERS in RHODE ISLAND 2014

SHARE OF RENTER HOUSEHOLDS BY AGE*

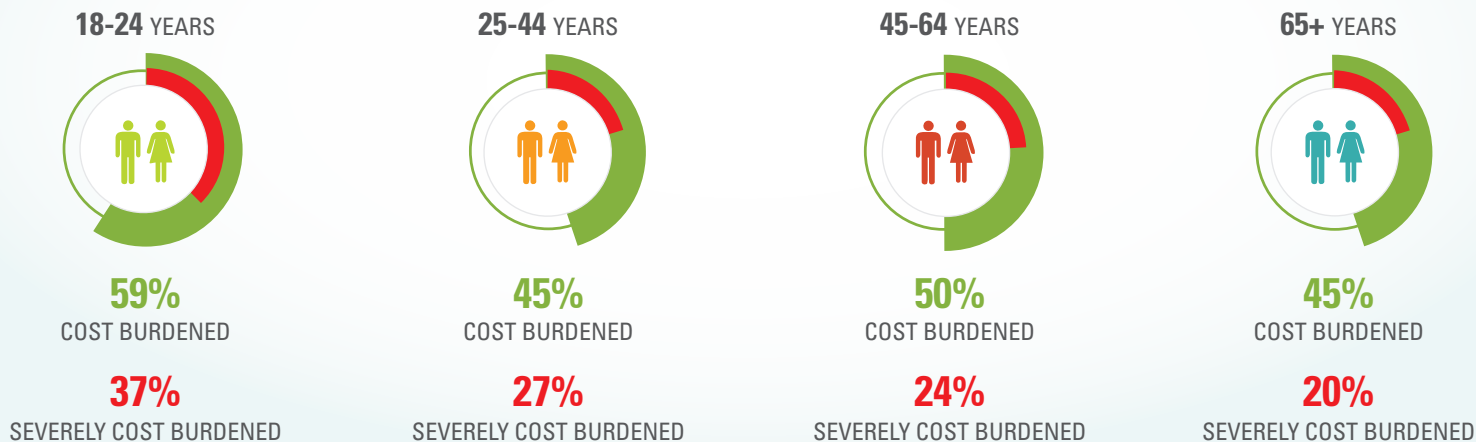
(of all renter household, % in each age)



MEDIAN RENTER HOUSEHOLD INCOMES BY AGE



PERCENTAGE OF RENTER HOUSEHOLDS COST BURDENED



■ Spending more than 30 percent of income on housing
 ■ Spending more than 50 percent of income on housing